

MICHAEL JORDAN'S

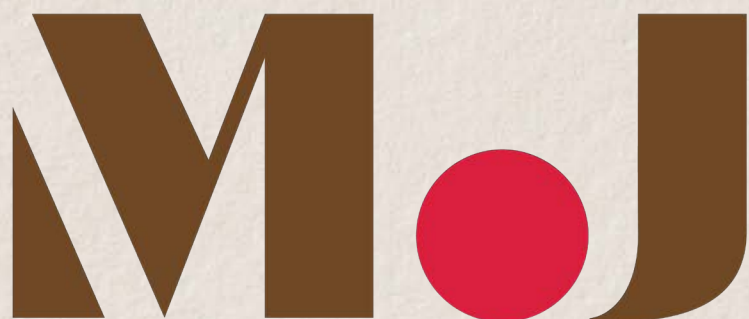
— STEAK HOUSE —

OAK BROOK









# MICHAEL JORDAN'S

— STEAK HOUSE —

OAK BROOK

## PLAN AN EXPERIENCE

Elevate your next event. Allow us to curate the perfect special occasion, both social and corporate. We have the ability to accomodate small, intimate events to extravagant close-down gatherings where we utilize the entire restaurant to fulfill your vision.

**KHRISTON JONES**

*Private Events Manager*

[kjones@crgchicago.com](mailto:kjones@crgchicago.com)

p: 630.828.2932

Michael Jordan's Steak House  
1225 W. 22nd St. | Oak Brook, IL 60523

# LUNCH

## GAME PLAN 1

\$45 PER PERSON

includes soft drinks, iced tea, freshly brewed coffee & hot tea

### APPETIZER

*served family style*

### SIGNATURE GARLIC BREAD

topped with our rich and creamy roth käse  
blue cheese fondue

### ENTREÉS

*host selects three, guest selects one  
chef's seasonal preparation*

### GRILLED CHICKEN CAESAR

### SHRIMP CHOPPED SALAD

### CREAMY MUSHROOM FETTUCCINE

### SLICED PRIME NY STRIP

### DESSERT

*guest selects one*

### CHOCOLATE GANACHE CAKE

topped with housemade sauces and fresh berries

### SEASONAL SORBET

## GAME PLAN 2

\$55 PER PERSON

includes soft drinks, iced tea, freshly brewed coffee & hot tea

### APPETIZER

*served family style*

### SIGNATURE GARLIC BREAD

topped with our rich and creamy roth käse blue cheese fondue

### SALADS

*host selects one*

### MIXED GREENS

red wine vinaigrette

### CAESAR SALAD

romaine hearts, olive oil croutons, grana padano,  
eggless dressing

### SIDE

*served family style*

### YUKON GOLD MASHED POTATOES

### CHILE LIME CORN

## BREAKFAST AT MJ'S

\$30 PER PERSON | 12 PERSON MINIMUM

### BEVERAGES

### BIG SHOULDERS COFFEE

### KILOGRAM ORGANIC HOT TEAS

### FRESH SQUEEZED ORANGE JUICE

### CRANBERRY JUICE

### BITES

### ASSORTED MUFFINS & DANISH

### SEASONAL FRUIT TRAY

### SMOKED BACON

### SEASONAL FRITTATA



### ENTREÉS

*host selects three, guest selects one  
chef's seasonal preparation*

### ROASTED CHICKEN

### FAROE ISLAND SALMON

### CREAMY MUSHROOM FETTUCCINE

### SLICED PRIME NY STRIP

### DESSERT

*guest selects one*

### CHOCOLATE GANACHE CAKE

topped with housemade sauces and fresh berries

### SEASONAL SORBET

*flat screen monitor & hdmi cable upon request, as available.  
menu items are seasonal and subject to change. menu is  
also subject to 7.5% IL sales tax and a service charge.*



# DINNER

## GAME PLAN 1

\$90 PER PERSON

includes soft drinks, iced tea, freshly brewed coffee & hot tea

### APPETIZER

*served family style*

#### SIGNATURE GARLIC BREAD

topped with our rich and creamy roth käse blue cheese fondue

#### NUESKE'S DOUBLE SMOKED BACON

thick double cut slab bacon, caramelized with burton's maple syrup

### SALADS

*host selects one*

#### MIXED GREENS

red wine vinaigrette

#### CAESAR SALAD

romaine hearts, olive oil croutons, grana padano, eggless dressing

### ENTREÉS

*host selects three, guest selects one  
chef's seasonal preparation*

#### SLICED PRIME NY STRIP

#### FILET MIGNON

#### CREAMY MUSHROOM FETTUCCINE

#### ROASTED CHICKEN

#### FAROE ISLAND SALMON

### SIDE

*served family style*

#### YUKON GOLD MASHED POTATOES

#### CHILE LIME CORN

#### GREEN BEANS

### DESSERT

*host selects three, guest selects one*

#### PEANUT BUTTER PIE

cocoa crust, silky peanut butter, fresh whipped cream

#### KEY LIME PIE

graham cracker crust, fresh whipped cream, meringue

#### CHOCOLATE GANACHE CAKE

topped with housemade sauces and fresh berries

#### SEASONAL SORBET

*flat screen monitor & hdmi cable upon request, as available.  
menu items are seasonal and subject to change. menu is  
also subject to 7.5% IL sales tax and a service charge.*

## GAME PLAN 2

\$110 PER PERSON

includes soft drinks, iced tea, freshly brewed coffee & hot tea

### APPETIZER

*served family style*

#### SIGNATURE GARLIC BREAD

topped with our rich and creamy roth käse blue cheese fondue

#### NUESKE'S DOUBLE SMOKED BACON

thick double cut slab bacon, caramelized with burton's maple syrup

#### SHRIMP COCKTAIL

cocktail sauce, lime and avocado salad

#### FRIED CALAMARI

spicy marinara, creamy horseradish

### SALADS

*guest selects one*

#### MIXED GREENS

red wine vinaigrette

#### CAESAR SALAD

romaine hearts, olive oil croutons, grana padano, eggless dressing

#### KALE SALAD

goat cheese, candied pecan, honey crisp apple, cranberries with lemon vinaigrette

### ENTREÉS

*host selects three, guest selects one  
chef's seasonal preparation*

#### BONE-IN RIBEYE {23 oz}

#### FILET MIGNON

#### CREAMY MUSHROOM FETTUCCINE

#### ROASTED CHICKEN

#### FAROE ISLAND SALMON

#### SEAFOOD FETTUCCINE

### SIDE

*served family style*

#### YUKON GOLD MASHED POTATOES

#### CHILE LIME CORN

#### GREEN BEANS

#### FOUR CHEESE MAC

### DESSERT

*host selects three, guest selects one*

#### PEANUT BUTTER PIE

cocoa crust, silky peanut butter, fresh whipped cream

#### KEY LIME PIE

graham cracker crust, fresh whipped cream, meringue

#### CHOCOLATE GANACHE CAKE

topped with housemade sauces and fresh berries

#### SEASONAL SORBET





# LUNCH & DINNER

## RECEPTION STYLE

.....  
includes soft drinks, iced tea, freshly brewed coffee & hot tea

### STARTERS

*passed or stationed, priced per dozen*

- BACON BITS 36.
- MJ'S CHOPPED SALAD CUP 36.
- SHRIMP SKEWERS 40.
- SWEET GINGER MARINATED CHICKEN SKEWERS 32.
- ROASTED SEASONAL VEGETABLE 29.
- CAPRESE SKEWERS 32.
- MJ'S GRILLED CORN CUPS 24.
- MINI GARLIC BREAD 24.
- MINI WAGYU MEATBALLS 42.
- MINI MIKE SLIDERS 45.
- MINI PRIME NY STRIP CROSTINI 45.
- MINI GRILLED CHEESE & TOMATO BISQUE 24.
- MINI CRAB CAKES 60.

### ENTREÉS

*stationed, priced per person*

- SLICED PRIME NY STRIP 19.
- CREAMY MUSHROOM FETTUCCINE 12.
- ROASTED CHICKEN 16.
- FAROE ISLAND SALMON 17.
- SEAFOOD FETTUCINE 22.

### ADDITIONAL REPLENISHMENTS

*priced per person, upon request*

- ROASTED CHICKEN 13.
- CREAMY MUSHROOM FETTUCCINE 9.
- SLICED PRIME NY STRIP 15.
- FAROE ISLAND SALMON 12.
- SEAFOOD FETTUCINE 18.

### DESSERT

*priced per dozen, minimum 2 dozen*

- MINI KEY LIME PIE 18.
- MINI CHOCOLATE GANACHE CAKE 18.
- CHOCOLATE CHIP COOKIES 12.



**BARTENDER FEE**  
PRIVATE BARTENDER 100+

*flat screen monitor and hdmi cable upon request, as available.*

menu items are seasonal and subject to change. menu is also subject to 7.5% IL sales tax and a service charge.







# FLOOR PLANS

## PRIVATE DINING HIGHLIGHTS

---

- ability to comfortably accommodate parties as intimate as 10 and as large as 250
- outdoor seating available with beautiful living decor
- extremely flexible and versatile dining space able to accommodate a large number of space and table configurations
- conference table, rounds or square tables available in our versatile dining space
- mixed media capable LED tv's throughout
- modern decor with wood accents and the largest private collection of unique MJ photography
- several configurations allow for access to full bar with beer on tap, cocktails and wine
- perfectly suited for both business and social events alike
- ADA accessible

### CHAPEL HILL

---

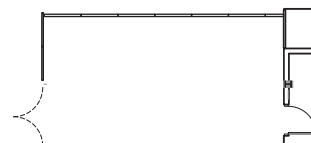
- seating for up to 20
- equipped with 55" LED tv with mixed media capabilities
- ADA accessible



### CHARLOTTE

---

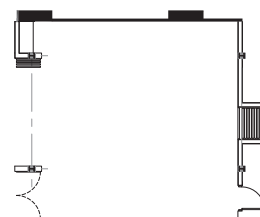
- seating for up to 24
- equipped with 55" LED tv with mixed media capabilities
- ADA accessible



### CHICAGO

---

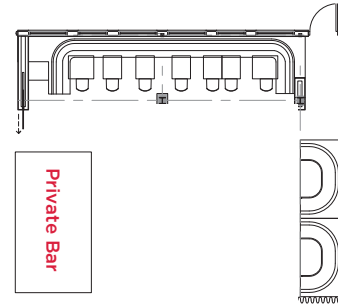
- seating for up to 45
- equipped with two 55" LED tv with mixed media capabilities
- ADA accessible





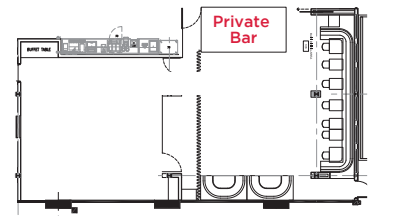
## JUPITER

- seating for up to 50
- full private bar in room with beer on tap, wine & cocktails
- equipped with 55" LED tv with mixed media capabilities
- ADA accessible



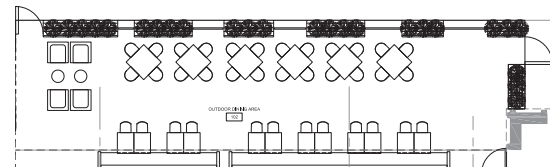
## CENTER COURT

- seating for up to 100
- equipped with three 55" LED tv's with mixed media capabilities
- full bar in room with beer on tap, wine and cocktails
- ADA accessible



## JUPITER PATIO

- seating for up to 40
- available as stand alone area and/or jupiter or center court add on
- beautiful outdoor landscaping and living décor
- ADA accessible



## FULL COURT (BUYOUT)

- indoor with seating for 250
- patio outdoor seating with living décor and seating for 50
- seating for 320 total indoor and out
- full flexibility in seating and reception arrangement
- 2 full bars with beer on tap, wine and cocktails
- 9 55" LED tv's with mixed media capabilities
- elegant wine wall display featuring michael jordan's private collection
- ADA accessible

